

# Education Dashboard 2024

## Outcomes

EYFSP - % achieving GLD	2019*	2022	2023	2024	Trend (2022-2024)
All Pupils	72.6	64.3	67.2	68.0	
National	71.8	63.4	65.6	67.7	
Free School Meals (FSM)	54.0	46.0	46.1	47.1	
Non Free School Meals (Non FSM)	75.0	67.0	71.1	71.7	
SEND (SEN Support & EHCP)	27.0	18.5	21.1	22.2	
EHCP	7.0	5.0	5.6	4.0	
SEN Support	31.0	22.8	26.3	30.6	
Non SEND	77.0	68.6	72.6	74.4	
Shropshire CLA (903 Data - no SFR published)	40.0	41.7	40.7	20.0	
Shropshire CLA (all children)					

\* 2022 and 2023 data is non comparative to earlier years due to EYFS reforms introduced in Sept 21

EYFSP - % Com, Lang & Lit	2019*	2022	2023	2024	Trend (2022-2024)
All Pupils	No published LA data for this indicator prior to 2022	67.4	69.6	69.9	
National		67.1	68.8	69.2	
Free School Meals (FSM)		48.6	49.1	49.0	
Non Free School Meals (Non FSM)		70.1	73.3	73.6	
SEND (SEN Support & EHCP)		22.5	24.6	25.1	
EHCP		6.7	8.5	4.0	
SEN Support		27.5	30.0	34.7	
Non SEND		71.6	74.9	76.2	
Shropshire CLA (Nexus 903 Data - not published)		not in nexus but coming soon			
Shropshire CLA (all children)					

\* 2022 and 2023 data is non comparative to earlier years due to EYFS reforms introduced in Sept 21.

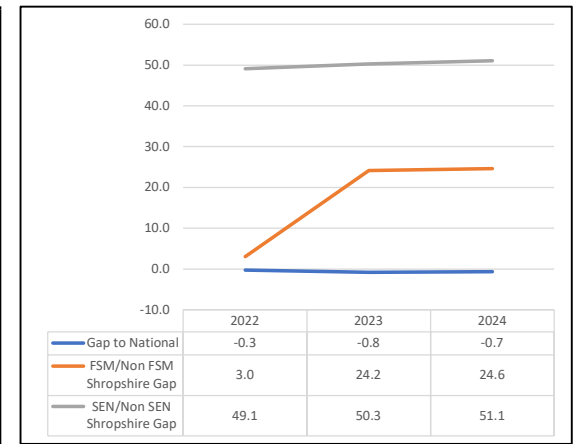
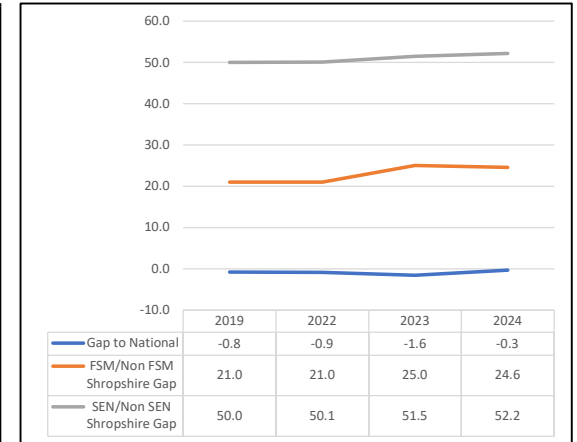
## Latest Benchmark 2024

Shropshire	National	Statistical Neighbour	West Mid
68.0	67.7	68.8	66.2
47.1	51.5	48.6	53.9
71.7	72.0	72.6	70.6
22.2	19.8	18.9	22.0
4.0	3.8	4.8	2.2
30.6	24.9	27.6	23.5
74.4	75.6	76.3	74.9
20.0			
No published comparators			

## National Ranking (1 being highest, 152 lowest)

2022	2023	2024
62	54	74
91	119	127
88	56	85
60	34	34
29	28	63
68	42	22
90	71	103
No published comparators		
No published comparators		

## Gaps

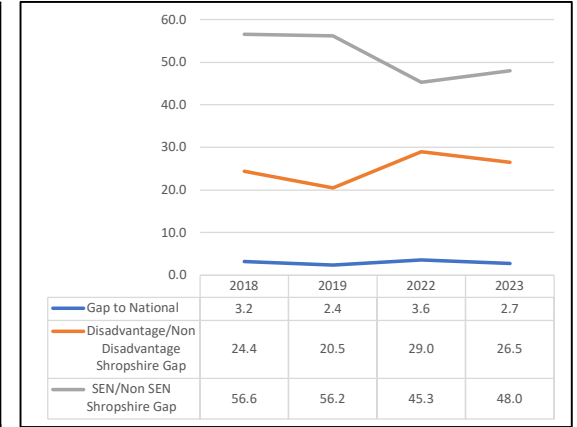


2023 KS1 Benchmarks

<b>KS1 Reading, Writing and Maths EXS+ (no longer statutory from 2024)</b>	2018	2019	2022	2023	Trend
All Pupils	62.1	62.5	49.8	53.3	
National (Nexus)	65.3	64.9	53.4	56.0	
Disadvantage	41.5	45.2	25.9	31.8	
Non Disadvantage	65.9	65.7	54.9	58.3	
SEND (SEN Support & EHCP)	12.7	14.6	11.1	12.5	
EHCP	4.2	1.3	5.4	5.3	
SEN Support	14.9	17.5	12.6	13.9	
Non SEND	69.3	70.8	56.4	60.5	
Shropshire CLA ( <i>Nexus 903 Data - not published</i> )	45.5	0.0	26.7	37.0	
Shropshire CLA (all children)					

Shropshire	National (Nexus)	Statistical Neighbour	West Midlands
53.3	56.0	N/A	55.9
31.8	Not available		
58.3			
12.5			
5.3			
13.9			
60.5			
37.0	32.0	not available	37.0
No published comparators			

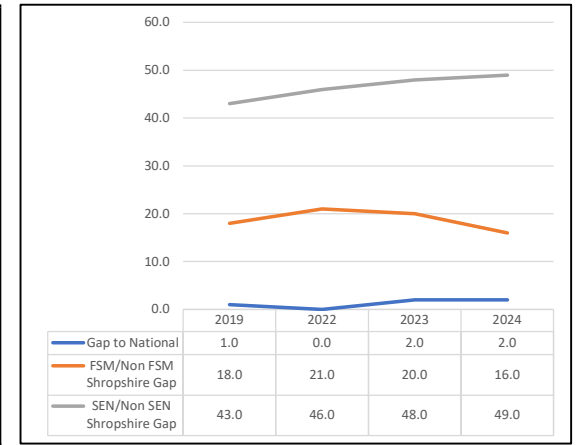
2019	2022	2023
RWM EXS+ not published by DfE, so data from other authorities is not available for comparison		



<b>KS1 - Year 1 Phonics</b>	2019	2022	2023	2024	Trend
All Pupils	81.0	75.0	77.0	78.0	
National	82.0	75.0	79.0	80.0	
Free School Meals (FSM)	65.0	58.0	60.0	65.0	
Non Free School Meals (Non FSM)	83.0	79.0	80.0	81.0	
SEND (SEN Support & EHCP)	43.0	35.0	36.0	37.0	
EHCP	22.0	15.0	14.0	21.0	
SEN Support	49.0	39.0	41.0	42.0	
Non SEND	86.0	81.0	84.0	86.0	
Shropshire CLA ( <i>Nexus 903 Data - not published</i> )	87.5	58.8	50.0	43.8	
Shropshire CLA (all children)					

Shropshire	National	Statistical Neighbour	West Mid
78.0	80.0	81.0	80.0
65.0	68.0	66.0	71.0
81.0	84.0	84.0	83.0
37.0	44.0	45.0	43.0
21.0	20.0	19.0	15.0
42.0	52.0	51.0	51.0
86.0	88.0	89.0	88.0
43.8			
No published comparators			

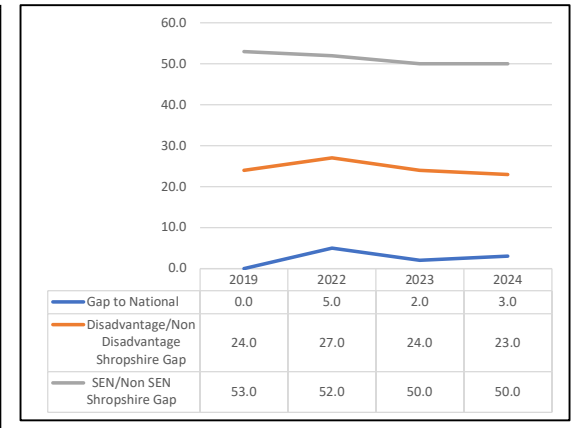
2022	2023	2024
78	108	117
110	137	107
78	119	128
106	137	144
99	114	57
115	143	144
92	112	119
No published comparators		
No published comparators		



<b>KS2 - RWM EXS+</b>	2019	2022	2023	2024	Trend
All Pupils	65.0	54.0	58.0	57.0	
National	65.0	59.0	60.0	60.0	
Disadvantage	47.0	34.0	39.0	40.0	
Non Disadvantage	71.0	61.0	63.0	63.0	
SEND (SEN Support & EHCP)	22.0	13.0	18.0	18.0	
EHCP	14.0	7.0	8.0	7.0	
SEN Support	23.0	14.0	20.0	21.0	
Non SEND	75.0	65.0	68.0	68.0	
Shropshire CLA ( <i>Nexus 903 Data - not published</i> )	25.0	42.0	39.1	13.0	
Shropshire CLA (all children)					

Shropshire	National	Statistical Neighbour	West Mid
57.0	60.0	57.0	59.0
40.0	45.0	38.0	47.0
63.0	67.0	63.0	66.0
18.0	21.0	19.0	19.0
7.0	9.0	7.0	7.0
21.0	26.0	22.0	22.0
68.0	71.0	69.0	71.0
13.0			
No published comparators			

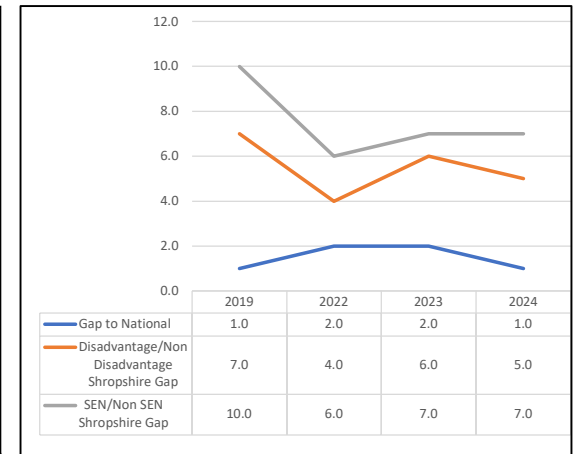
2022	2023	2024
134	95	118
141	113	111
135	120	124
138	102	119
62	64	90
144	111	118
129	104	117
9	tbc	tbc
No published comparators		



<b>KS2 - RWM GDS+</b>	2019	2022	2023	2024	Trend
All Pupils	10.0	5.0	6.0	7.0	
National	11.0	7.0	8.0	8.0	
Disadvantage	5.0	2.0	2.0	3.0	
Non Disadvantage	12.0	6.0	8.0	8.0	
SEND (SEN Support & EHCP)	2.0	0.0	1.0	1.0	
EHCP	3.0	0.0	0.0	0.0	
SEN Support	1.0	0.0	1.0	1.0	
Non SEND	12.0	6.0	8.0	8.0	
Shropshire CLA (Nexus 903 Data - not published)	0.0	6.7	0.0		
Shropshire CLA (all children)					

Shropshire	National	Statistical Neighbour	West Mid
7.0	8.0	7.0	7.0
3.0	3.0	2.0	3.0
8.0	10.0	8.0	9.0
1.0	1.0	1.0	1.0
0.0	0.5	0.4	0.3
1.0	1.0	1.0	1.0
8.0	9.0	8.0	8.0
No published comparators			

2022	2023	2024
111	104	65
70	95	51
125	102	90
-	55	41
-	-	-
-	72	66
114	94	88
-	-	-
No published comparators		

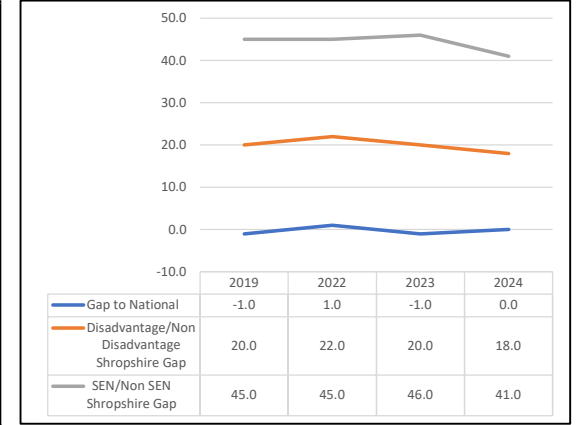


Data Source: published DfE statistics and NCER Nexus. N.B. There is no data for 2020 and 2021 due to the impact of Covid 19 and the cancellation of all end of year key stage assessments

<b>KS2 - Reading EXS</b>	2019	2022	2023	2024	Trend
All Pupils	75.0	74.0	74.0	74.0	
National	74.0	75.0	73.0	74.0	
Disadvantage	60.0	57.0	59.0	61.0	
Non Disadvantage	80.0	79.0	79.0	79.0	
SEND (SEN Support & EHCP)	38.0	38.0	38.0	42.0	
EHCP	24.0	15.0	14.0	20.0	
SEN Support	41.0	42.0	42.0	48.0	
Non SEND	83.0	83.0	84.0	83.0	
Shropshire CLA (Nexus 903 Data - not published)	50.0	58.6	54.2	47.8	
Shropshire CLA (all children)					

Shropshire	National	Statistical Neighbour	West Mid
74.0	74.0	74.0	73.0
61.0	62.0	59.0	63.0
79.0	79.0	79.0	78.0
42.0	41.0	41.0	37.0
20.0	19.0	19.0	15.0
48.0	48.0	47.0	43.0
83.0	84.0	84.0	83.0
47.8			
No published comparators			

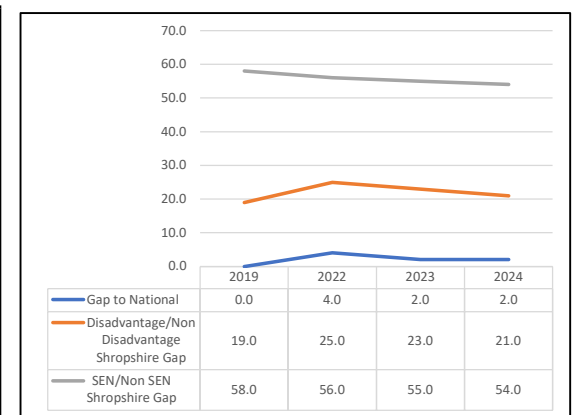
2022	2023	2024
88	59	71
129	84	75
96	72	75
61	78	61
79	114	57
92	100	64
100	47	84
No published comparators		



<b>KS2 - Writing EXS</b>	2019	2022	2023	2024	Trend
All Pupils	79.0	66.0	70.0	70.0	
National	79.0	70.0	72.0	72.0	
Disadvantage	65.0	47.0	52.0	55.0	
Non Disadvantage	84.0	72.0	75.0	76.0	
SEND (SEN Support & EHCP)	32.0	21.0	26.0	28.0	
EHCP	18.0	12.0	9.0	13.0	
SEN Support	34.0	22.0	29.0	32.0	
Non SEND	90.0	77.0	81.0	82.0	
Shropshire CLA (Nexus 903 Data - not published)	50.0	55.2	43.5	43.5	
Shropshire CLA (all children)					

Shropshire	National	Statistical Neighbour	West Mid
70.0	72.0	70.0	71.0
55.0	58.0	54.0	61.0
76.0	77.0	76.0	77.0
28.0	30.0	28.0	28.0
13.0	12.0	11.0	9.0
32.0	36.0	33.0	33.0
82.0	83.0	83.0	83.0
43.5			
No published comparators			

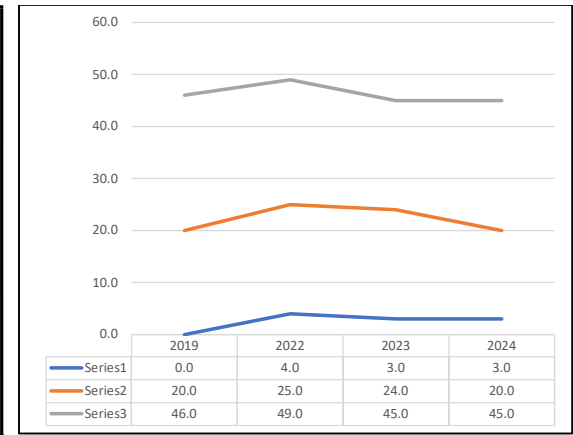
2022	2023	2024
127	102	98
141	124	102
132	124	97
135	108	93
39	108	50
143	122	110
134	116	100
No published comparators		



<b>KS2 - Maths EXS</b>	2019	2022	2023	2024	Trend
All Pupils	79.0	68.0	70.0	70.0	
National	79.0	72.0	73.0	73.0	
Disadvantage	63.0	49.0	52.0	55.0	
Non Disadvantage	83.0	74.0	76.0	75.0	
SEND (SEN Support & EHCP)	41.0	29.0	35.0	35.0	
EHCP	24.0	13.0	14.0	17.0	
SEN Support	44.0	32.0	38.0	39.0	
Non SEND	87.0	78.0	80.0	80.0	
Shropshire CLA ( <i>Nexus 903 Data - not published</i> )	50.0	53.6	37.5	21.7	
Shropshire CLA (all children)					

Shropshire	National	Statistical Neighbour	West Mid
70.0	73.0	70.0	72.0
55.0	59.0	52.0	61.0
75.0	79.0	75.0	78.0
35.0	37.0	34.0	34.0
17.0	17.0	15.0	13.0
39.0	44.0	40.0	40.0
80.0	83.0	81.0	82.0
21.7			
No published comparators			

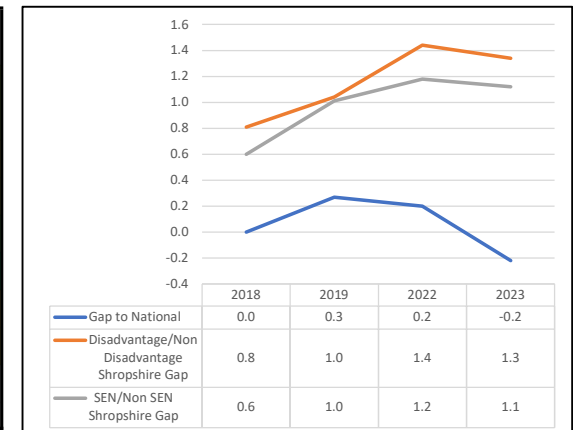
2022	2023	2024
121	123	116
137	130	102
132	130	135
133	88	101
85	102	70
140	120	121
121	121	121
No published comparators		



<b>KS2 - Average Progress Reading</b> <i>(no progress for 2024)</i>	2018	2019	2022	2023	Trend
All Pupils	0.00	-0.24	-0.16	0.26	
National	0.00	0.03	0.04	0.04	
Disadvantage	-0.63	-1.03	-1.27	-0.77	
Non Disadvantage	0.18	0.01	0.17	0.57	
SEND (SEN Support & EHCP)	-0.50	-1.07	-1.11	-0.64	
EHCP	-0.88	-0.34	-4.81	-2.05	
SEN Support	-0.41	-1.22	-0.51	-0.49	
Non SEND	0.10	-0.06	0.07	0.48	
Shropshire CLA ( <i>Nexus 903 Data - not published</i> )	3.23	0.85	-2.30	0.04	
Shropshire CLA (all children)					

Shropshire	National	Statistical Neighbour	West Midlands
0.26	0.04	-0.01	-0.10
-0.77	-0.85	-1.13	-0.71
0.57	0.43	0.35	0.23
-0.64	-1.42	-1.53	-1.35
-2.05	-4.36	-4.22	-4.45
-0.49	-0.58	-0.83	-0.58
0.48	0.42	0.40	0.22
0.04	tbc	tbc	-0.54
No published comparators			

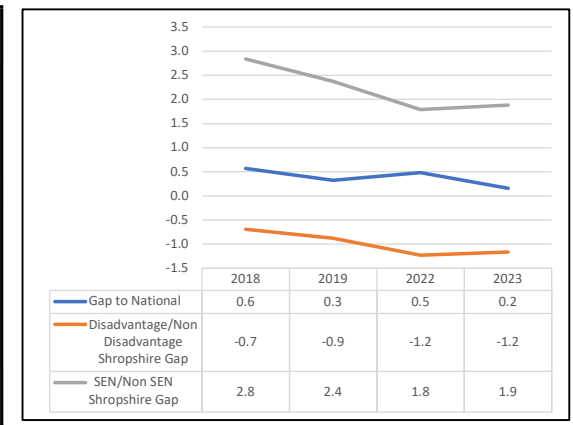
2019	2022	2023
111	104	59
105	102	75
113	107	67
57	42	36
8	95	8
95	55	80
120	120	73
tbc	tbc	tbc
No published comparators		



<b>KS2 - Average Progress Writing</b> <i>(no progress for 2024)</i>	2018	2019	2022	2023	Trend
All Pupils	-0.57	-0.29	-0.43	-0.12	
National	0.00	0.03	0.05	0.04	
Disadvantage	-1.10	-0.96	-1.37	-1.02	
Non Disadvantage	-0.41	-0.08	-0.14	0.14	
SEND (SEN Support & EHCP)	-2.93	-2.24	-1.87	-1.63	
EHCP	-2.27	0.27	-3.95	-5.00	
SEN Support	-3.08	-2.77	-1.53	-1.25	
Non SEND	-0.09	0.13	-0.08	0.25	
Shropshire CLA ( <i>Nexus 903 Data - not published</i> )	0.80	0.72	-1.18	0.70	
Shropshire CLA (all children)					

Shropshire	National	Statistical Neighbour	West Midlands
-0.12	0.04	-0.27	-0.01
-1.02	-0.69	-1.39	-0.56
0.14	0.36	0.09	0.29
-1.63	-2.18	-2.59	-2.05
-5.00	-4.41	-4.91	-4.46
-1.25	-1.53	-1.45	-2.00
0.25	0.62	0.36	0.52
0.70	tbc	tbc	-0.74
No published comparators			

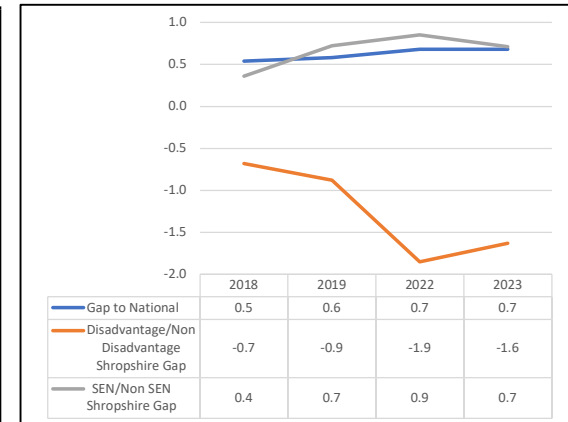
2019	2022	2023
109	120	99
103	110	101
111	123	106
78	70	53
1	74	109
136	80	65
114	129	116
tbc	tbc	tbc
No published comparators		



<b>KS2 - Average Progress Maths</b> <i>(no progress for 2024)</i>	2018	2019	2022	2023	Trend
All Pupils	-0.54	-0.55	-0.64	-0.64	
National	0.00	0.03	0.04	0.04	
Disadvantage	-1.07	-1.21	-2.06	-1.90	
Non Disadvantage	-0.39	-0.33	-0.21	-0.27	
SEND (SEN Support & EHCP)	-0.84	-1.13	-1.32	-1.21	
EHCP	-1.97	-0.73	-4.76	-4.00	
SEN Support	-0.59	-1.21	-0.76	-0.90	
Non SEND	-0.48	-0.41	-0.47	-0.50	
Shropshire CLA ( <i>Nexus 903 Data - not published</i> )	0.78	-2.66	-1.63	-1.73	
Shropshire CLA (all children)					

Shropshire	National	Statistical Neighbour	West Midlands
-0.64	0.04	-0.72	-0.03
-1.90	-1.04	-2.01	-0.89
-0.27	0.51	-0.31	0.43
-1.21	-1.57	-2.06	-1.47
-4.00	-4.12	-4.55	-4.36
-0.90	-0.84	-0.75	-1.44
-0.50	0.45	-0.36	0.34
-1.73	tdc	tdc	-1.00
No published comparators			

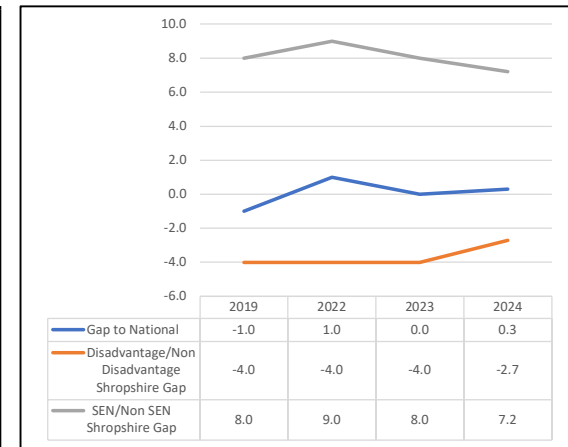
2019	2022	2023
123	127	129
99	124	126
128	129	132
60	74	65
6	115	82
94	71	90
132	136	138
tdc	tdc	tdc
No published comparators		



<b>KS2 - Average Scaled Score in Reading</b>	2019	2022	2023	2024	Trend
All Pupils	105	104	105	105	
National	104	105	105	105	
Disadvantage	102	101	102	103	
Non Disadvantage	106	105	106	106	
SEND (SEN Support & EHCP)	98	97	99	99	
EHCP	98	96	99	98	
SEN Support	98	97	99	100	
Non SEND	106	106	107	106	
Shropshire CLA ( <i>Nexus 903 Data - not published</i> )	99	101	99	101	
Shropshire CLA (all children)					

Shropshire	National	Statistical Neighbour	West Mid
105	105	105	105
103	103	102	103
106	106	106	106
99	99	99	98
98	98	97	97
100	100	100	99
106	107	107	106
101			
No published comparators			

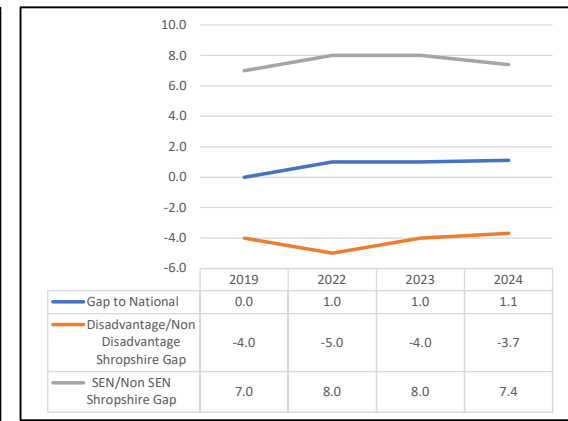
2022	2023	2024
99	52	47
113	70	32
105	56	53
105	68	74
49	16	45
114	75	47
58	22	76
tdc	tdc	tdc
No published comparators		



<b>KS2 - Average Scaled Score in Maths</b>	2019	2022	2023	2024	Trend
All Pupils	105	103	103	103	
National	105	104	104	104	
Disadvantage	102	99	100	100	
Non Disadvantage	106	104	104	104	
SEND (SEN Support & EHCP)	99	96	97	97	
EHCP	98	96	97	96	
SEN Support	99	96	97	97	
Non SEND	106	104	105	105	
Shropshire CLA ( <i>Nexus 903 Data - not published</i> )	97	101	97	97	
Shropshire CLA (all children)					

Shropshire	National	Statistical Neighbour	West Mid
103	104	103	104
100	101	100	102
104	106	104	105
97	98	97	97
96	97	95	96
97	99	98	98
105	106	105	105
97			
No published comparators			

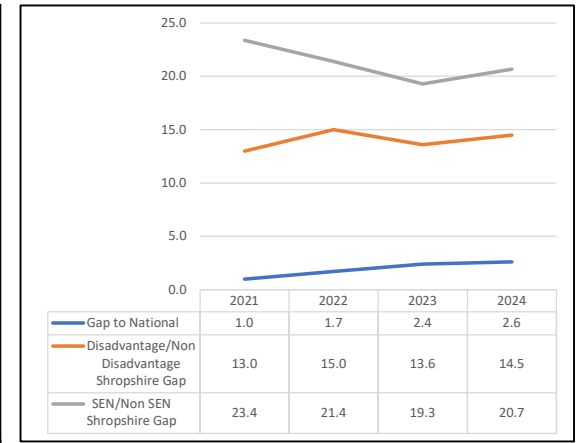
2022	2023	2024
94	118	122
138	108	117
111	131	135
119	90	111
43	31	69
128	101	127
118	78	86
tdc	tdc	tdc
No published comparators		



<b>KS4 - Attainment 8</b>	2021	2022	2023	2024	Trend
All Pupils	49.9	47.2	44.0	43.5	
National	50.9	48.9	46.4	46.1	
Disadvantage	39.6	35.1	33.0	31.9	
Non Disadvantage	52.6	50.1	46.6	46.4	
SEND (SEN Support & EHCP)	29.5	28.6	27.4	25.6	
EHCP	22.9	19.2	18.3	17.8	
SEN Support	33.4	32.6	30.6	28.6	
Non SEND	52.9	50.0	46.7	46.3	
Shropshire CLA (based on published 903 - Nexus where published statistics are suppressed)	28.9	24.1	18.9		
Shropshire CLA (all children)					

Shropshire	National	Statistical Neighbour	West Midlands
43.5	46.1	44.8	44.5
31.9	34.7	32.1	35.1
46.4	50.2	48.2	48.6
25.6	27.8	27.0	27.1
17.8	14.2	13.7	12.2
28.6	33.1	31.9	32.0
46.3	50.0	49.0	48.3
0.0			
No published comparators			

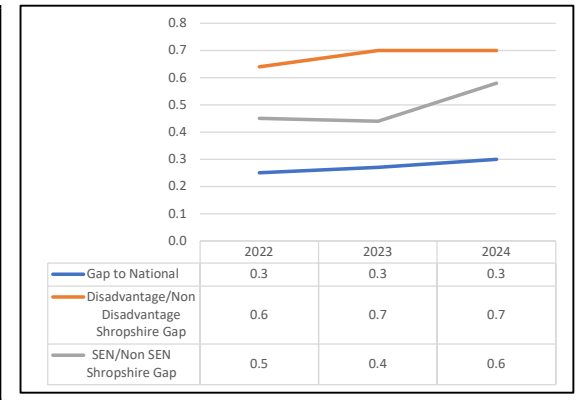
2022	2023	2024
97	114	112
108	97	112
116	138	131
85	80	107
17	18	27
107	114	134
115	128	130
28	tbc	
No published comparators		



<b>KS4 - Progress 8</b>	2021*	2022	2023	2024	Trend
All Pupils	No progress data available for 2020 and 2021	-0.28	-0.30	-0.33	
National		-0.03	-0.03	-0.03	
Disadvantage		-0.80	-0.87	-0.89	
Non Disadvantage		-0.16	-0.17	-0.19	
SEND (SEN Support & EHCP)		-0.67	-0.68	-0.83	
EHCP		-1.04	-0.92	-1.25	
SEN Support		-0.53	-0.61	-0.67	
Non SEND		-0.22	-0.24	-0.25	
Shropshire CLA (based on published 903 - Nexus where published statistics are suppressed)	-1.09	-1.42			

Shropshire	National	Statistical Neighbour	West Midlands
-0.33	-0.03	-0.10	-0.11
-0.89	-0.57	-0.70	-0.52
-0.19	0.16	0.06	0.07
-0.83	-0.63	-0.67	-0.63
-0.67	-0.45	-0.50	-0.46
-0.25	0.10	0.04	0.01
0.00			

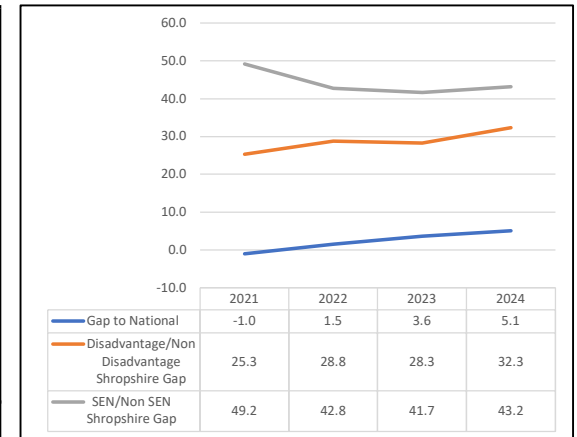
2022	2023	2024
134	137	138
126	128	138
142	143	146
72	92	122
32	35	110
82	114	122
144	13	142
41	tbc	



<b>KS4 (9 to 4) in English and Maths</b>	2021	2022	2023	2024	Trend
All Pupils	73.2	67.5	61.8	60.3	
National	72.2	69.0	65.4	65.4	
Disadvantage	53.1	44.3	38.9	34.5	
Non Disadvantage	78.4	73.1	67.2	66.8	
SEND (SEN Support & EHCP)	30.2	30.3	25.9	23.1	
EHCP	28.1	18.0	16.0	17.5	
SEN Support	31.4	35.5	29.3	25.3	
Non SEND	79.4	73.1	67.6	66.3	
Shropshire CLA (based on published 903 - Nexus where published statistics are suppressed)	42.3	29.4	16.7		
Shropshire CLA (all children)					

Shropshire	National	Statistical Neighbour	West Midlands
60.3	65.4	64.1	62.1
34.5	43.7	39.0	43.4
66.8	73.1	70.7	70.5
23.1	30.8	28.7	28.3
17.5	13.0	12.0	9.8
25.3	37.7	34.9	34.4
66.3	72.7	72.4	69.6
0.0			
No published comparators			

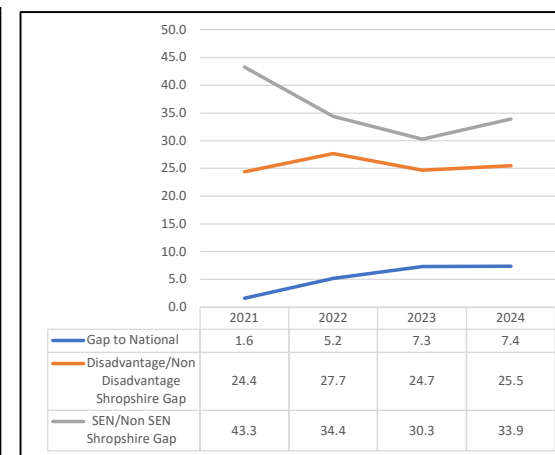
2022	2023	2024
87	109	119
98	105	145
115	137	140
86	113	130
34	39	34
100	125	147
108	120	132
20		



KS4 (9 to 5) in English and Maths	2021	2022	2023	2024	Trend
All Pupils	50.3	44.8	38.2	38.8	
National	51.9	50.0	45.5	46.2	
Disadvantage	31.0	22.4	18.2	18.4	
Non Disadvantage	55.4	50.1	42.9	43.9	
SEND (SEN Support & EHCP)	12.4	14.9	12.1	9.6	
EHCP	14.4	9.9	5.7	7.5	
SEN Support	11.3	17.0	14.3	10.4	
Non SEND	55.7	49.3	42.4	43.5	
CLA (based on published 903 - Nexus where published statistics are suppressed)	16.7	11.8	4.2		
Shropshire CLA (all children)					

Shropshire	National	Statistical Neighbour	West Midlands
38.8	46.2	43.4	42.4
18.4	26.0	21.1	25.7
43.9	53.4	49.2	49.8
9.6	17.5	15.4	15.2
7.5	7.0	5.8	5.2
10.4	21.6	18.9	18.5
43.5	52.3	49.9	48.3
0.0			
No published comparators			

2022	2023	2024
118	128	127
134	136	142
133	144	141
99	130	149
27	81	63
119	130	149
128	136	134
Unable to provide rank as suppressed figures in DfE publication		
No published comparators		



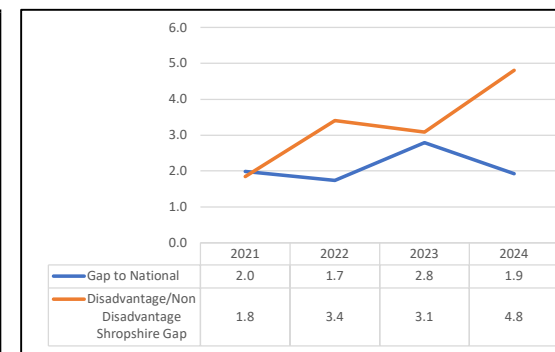
Data Source: published DfE statistics

In 2020 and 2021, all GCSEs in England have been reformed and use the new 9 to 1 grading system (rather than A\*-G). Year on year comparisons will be limited until these qualifications are consistently included from 2020 onwards. However, results for 2020 and 2021 are not comparable with earlier years due to the cancellation of exams (due to COVID-19) and the changes to the way GCSE grades were awarded and results for 2022 are not comparable with previous years due to the changes relating to grading assessments

KS5 APS per A-Level Entry (State-Funded Schools and Colleges)	2021	2022	2023	2024	Trend
All Pupils	38.47	36.12	31.37	32.42	
National	40.46	37.86	34.16	34.34	
Disadvantage	36.81	32.78	28.72	28.03	
Non Disadvantage	38.66	36.19	31.81	32.84	
SEND (SEN Support & EHCP)					
EHCP	36.07	31.94	33.89	34.32	
SEN Support	36.61	34.46	27.86	28.63	
Non SEND	38.61	35.92	31.52	32.71	

Shropshire	National	Statistical Neighbour	West Midlands
32.42	34.34	33.51	33.31
28.03	30.15	29.56	29.58
32.84	35.00	33.94	34.13
34.32	32.02	32.15	30.48
28.63	32.77	32.15	31.27
32.71	34.44	33.59	33.45

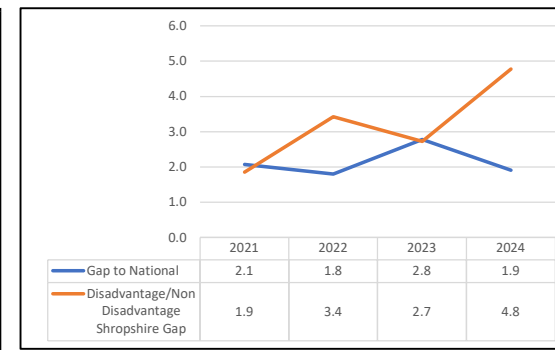
2022	2023	2024
105	122	104
84	93	110
119	123	111
103	63	43
89	122	127
113	120	100



KS5 APS per Academic Entry (State-Funded Schools and Colleges)	2021	2022	2023	2024	Trend
All Pupils	38.43	36.12	31.48	32.51	
National	40.50	37.92	34.26	34.42	
Disadvantage	36.77	32.76	29.16	28.15	
Non Disadvantage	38.63	36.19	31.89	32.93	
SEND (SEN Support & EHCP)					
EHCP	36.07	31.94	33.83	34.57	
SEN Support	36.13	34.53	28.73	28.81	
Non SEND	38.59	35.91	31.62	32.81	

Shropshire	National	Statistical Neighbour	West Midlands
32.51	34.42	33.55	33.30
28.15	30.16	29.53	29.53
32.93	35.09	33.99	34.12
34.57	32.03	31.91	30.45
28.81	32.87	32.19	31.20
32.81	34.53	33.65	33.45

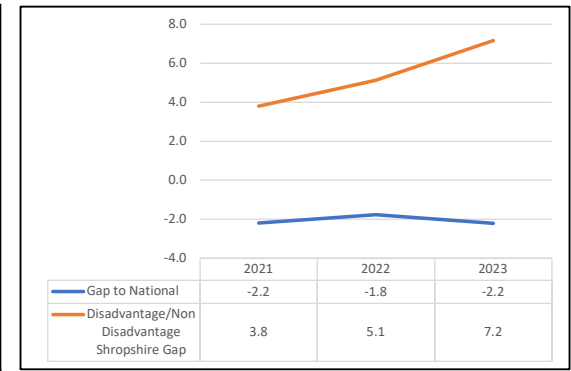
2022	2023	2024
107	123	101
87	86	108
119	123	107
103	61	41
89	114	127
113	120	99



<b>KSS APS per Applied General</b> (State-Funded Schools and Colleges) - DfE have withdrawn figures from 2024 publication	2021	2022	2023	2024	Trend
All Pupils	34.83	33.68	31.74		
National	32.63	31.91	29.52		
Disadvantage	31.63	29.07	25.89		
Non Disadvantage	35.42	34.20	33.06		
SEND (SEN Support & EHCP)					
EHCP	25.00	26.18	32.86		
SEN Support	35.00	35.87	30.64		
Non SEND	34.97	33.89	31.86		

Shropshire	National	Statistical Neighbour	West Midlands
0.00	0.00		
0.00			
0.00			
0.00			
0.00			
0.00			

2022	2023	2024
40	27	
90	113	
43	16	
100	23	
2	15	
43	27	

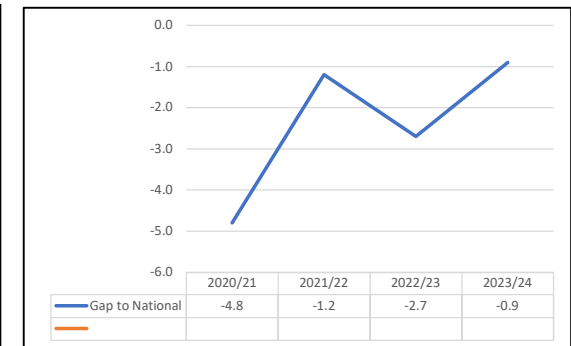


Data Source: published DfE statistics

<b>% NEET (inc not known 16-17 year olds)</b>	2020/21	2021/22	2022/23	2023/24	Trend
All Pupils	10.3	5.9	7.9	6.3	
National	5.5	4.7	5.2	5.4	
Disadvantage	No published data				•
Non Disadvantage	No published data				•
SEND (SEN Support & EHCP)					
EHCP	16.2	9.4	13.8	4.9	
SEN Support	19.1	9.5	18.5	10.9	
Non SEND	9.3	5.4	7.1	6.3	
Shropshire CLA (based on published 903)					
Shropshire CLA (all children)			12.0		

Shropshire	National	Statistical Neighbour	West Midlands
6.3	5.4	5.5	6.1
No published comparators			
No published comparators			
4.9	10.2	10.5	10.5
10.9	9.6	10.0	11.2
6.3	4.7	4.6	5.3
No published comparators			

2021/22	2022/23	2023/24
122	140	120
No published comparators		
No published comparators		
96	128	20
96	135	97
126	135	134
No published comparators		



Data Source: published DfE statistics NEET and activity not known 16-17 year olds (average of December, January and February)

latest publication released 30/01/2025



## Attendance

Latest Benchmark 2023 published date (not portal)

National Ranking (1 being highest, 152 lowest)

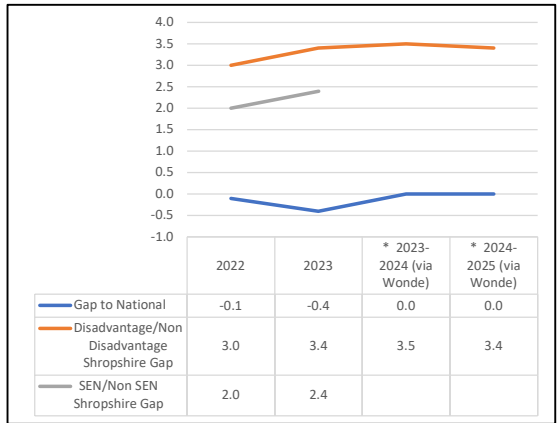
## Gaps

\* N.B DfE Portal includes all pupils (DfE published data is only Y1 plus)

Primary School Attendance (Full Academic Year)	2022	2023	* 2023-2024 (Full year on DfE Portal (via Wonde))	* 2024-2025 (Year to date on DfE Portal (via Wonde))	Trend
All Pupils	93.8	94.5	94.5	95.3	
National	93.7	94.1	94.5	95.3	
Free School Meals (eligible in the last 6 years (FSM6))	91.4	91.8	91.7	92.2	
Non Free School Meals (not eligible in the last 6 years (FSM6))	94.4	95.2	95.2	95.6	
SEND (SEN Support & EHCP)	92.1	92.5			
EHCP	90.2	90.2	89.8	90.1	
SEN Support	92.3	92.8	93.1	93.8	
Non SEND	94.1	94.9	94.8	95.5	
Shropshire CLA (based on published 903)	95.2				
Shropshire CLA (all children)		95.4			

Shropshire	National	Statistical Neighbour	West Midlands
94.5	94.5	94.2	93.8
91.7	91.6	91.4	91.6
95.2	95.1	95.0	94.9
0.0	91.9	91.9	91.7
89.8	90.1	89.6	89.5
93.1	92.2	92.3	91.9
94.8	94.6	94.8	94.3
0.0			
No published comparators			

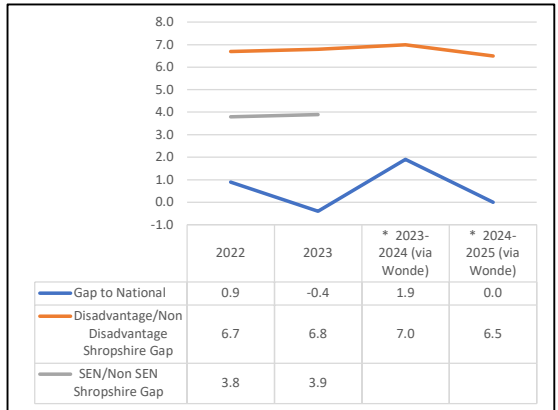
2021	2022	2023
24	79	29
34	93	74
37	115	53
14	66	33
60	93	91
16	64	29
31	86	35
104	104	
No published comparators		



Secondary School Attendance (Full Academic Year)	2022	2023	* 2023-2024 (Full year on DfE Portal (via Wonde))	* 2024-2025 (Year to date on DfE Portal (via Wonde))	Trend
All Pupils	90.1	91.1	89.1	92.6	
National	91.0	90.7	91.0	92.6	
Free School Meals (eligible in the last 6 years (FSM6))	84.8	85.7	83.4	87.4	
Non Free School Meals (not eligible in the last 6 years (FSM6))	91.5	92.5	90.4	93.9	
SEND (SEN Support & EHCP)	86.9	87.8			
EHCP	86.2	87.3	78.6	83.4	
SEN Support	87.0	87.9	86.2	89.8	
Non SEND	90.7	91.7	90.2	93.7	
Shropshire CLA (based on published 903)	90.7				
Shropshire CLA (all children)		89.0			

Shropshire	National	Statistical Neighbour	West Midlands
89.1	91.0	90.6	90.9
83.4	86.0	84.6	86.8
90.4	92.9	92.3	92.9
0.0	86.4	86.2	86.7
78.6	85.3	84.4	85.4
86.2	86.6	86.4	86.9
90.2	91.9	91.6	91.8
0.0			
No published comparators			

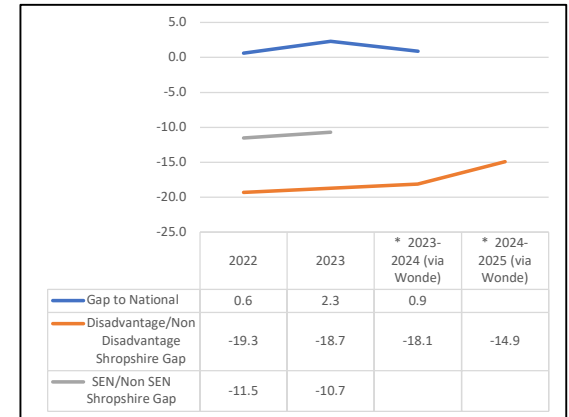
2021	2022	2023
78	121	72
108	126	72
113	144	120
73	89	42
71	84	52
50	93	43
92	132	89
77	77	
No published comparators		



<u>Primary School Persistently Absent (10% or more missed) (Full Academic Year)</u>	2022	2023	* 2023-2024 (Full year on DfE Portal (via Wonde))	* 2024-2025 (Year to date on DfE Portal (via Wonde))	Trend
All Pupils	17.1	13.9	14.2	14.6	
National	17.7	16.2	15.1	awaiting DfE	
Free School Meals (eligible in the last 6 years (FSM6))	32.3	28.6	28.8	26.9	
Non Free School Meals (not eligible in the last 6 years (FSM6))	13.0	9.9	10.7	12.0	
SEND (SEN Support & EHCP)	26.6	22.7			
EHCP	35.7	29.8	32.0	29.0	
SEN Support	25.4	21.8	21.3	18.8	
Non SEND	15.1	12.0	13.0	13.3	
Shropshire CLA (based on published 903)	10.1				
Shropshire CLA (all children)					

Shropshire	National	Statistical Neighbour	West Midlands
14.2	15.1	15.1	17.7
28.8	29.3	29.8	29.3
10.7	10.9	10.7	11.7
0.0	25.7	24.9	26.8
32.0	31.0	31.9	33.0
21.3	24.8	23.5	26.0
13.0	13.9	12.7	15.4
0.0			
No published comparators			

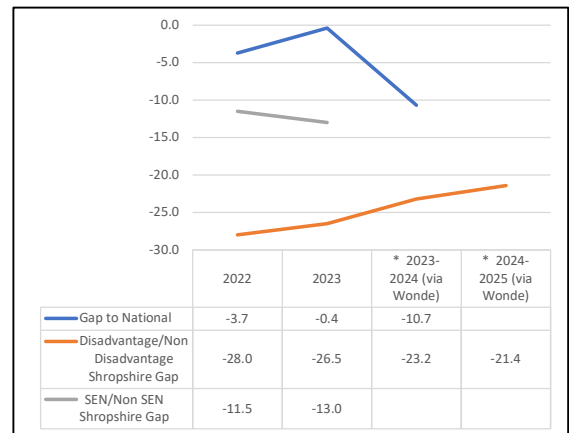
2021	2022	2023
11	69	28
22	107	68
26	92	47
13	80	24
61	129	71
15	68	25
17	66	34
57	47	
No published comparators		



<u>Secondary School Persistently Absent (10% or more missed) (Full Academic Year)</u>	2022	2023	* 2023-2024 (Full year on DfE Portal (via Wonde))	* 2024-2025 (Year to date on DfE Portal (via Wonde))	Trend
All Pupils	31.4	26.9	36.8	20.7	
National	27.7	26.5	26.1	awaiting DfE	
Free School Meals (eligible in the last 6 years (FSM6))	53.5	47.6	55.5	37.8	
Non Free School Meals (not eligible in the last 6 years (FSM6))	25.5	21.1	32.3	16.4	
SEND (SEN Support & EHCP)	41.1	37.6			
EHCP	41.4	38.6	51.7	38.5	
SEN Support	41.1	37.5	43.9	29.5	
Non SEND	29.6	24.6	34.0	17.9	
Shropshire CLA (based on published 903)	28.3				
Shropshire CLA (all children)					

Shropshire	National	Statistical Neighbour	West Midlands
36.8	26.1	27.7	27.4
55.5	43.8	48.4	42.7
32.3	19.5	21.4	19.7
0.0	39.1	39.5	39.2
51.7	39.1	41.0	39.8
43.9	39.0	39.4	39.1
34.0	23.8	24.7	24.7
0.0			
No published comparators			

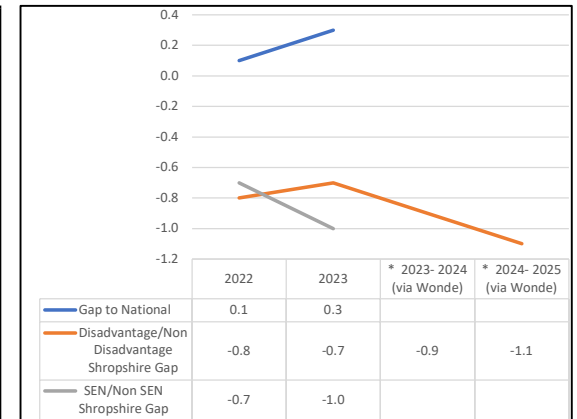
2021	2022	2023
83	126	87
114	145	104
111	143	121
90	102	59
91	105	79
63	102	58
91	131	91
83	109	
No published comparators		



Primary School Severely Absent (50% or more missed) (Full Academic Year)	2022	2023	* 2023-2024 (Full year on DfE Portal (via Wonde))	* 2024-2025 (Year to date on DfE Portal (via Wonde))	Trend
All Pupils	0.5	0.4	0.6	0.6	
National	0.6	0.7	awaiting DfE	awaiting DfE	
Free School Meals (eligible in the last 6 years (FSM6))	1.0	0.9	1.3	1.5	
Non Free School Meals (not eligible in the last 6 years (FSM6))	0.2	0.2	0.4	0.4	
SEND (SEN Support & EHCP)	0.9	1.1			
EHCP	2.1	2.7	3.5	4.2	
SEN Support	0.7	0.9	1.1	1.0	
Non SEND	0.2	0.1	0.2	0.3	
Shropshire CLA (based on published 903)					
Shropshire CLA (all children)					

Shropshire	National	Statistical Neighbour	West Midlands
0.6	awaiting DfE	0.6	0.8
1.3	1.3	1.4	1.3
0.4	0.3	0.3	0.4
0.0	1.5	1.7	1.6
3.5	3.2	4.0	3.9
1.1	1.2	1.3	1.3
0.2	0.3	0.2	0.4
0.0			
No published comparators			

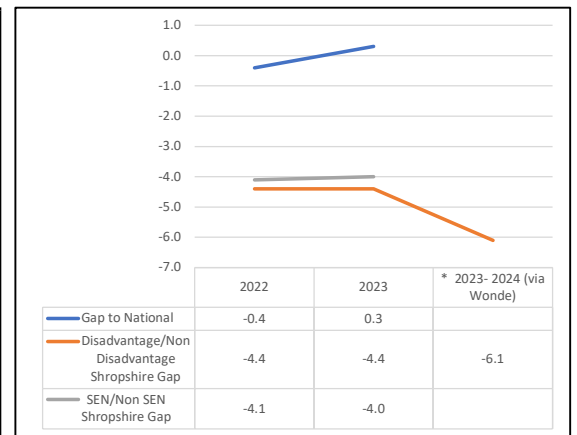
2021	2022	2023
21	33	6
76	71	32
16	37	26
50	49	56
59	73	73
60	59	54
36	65	6
No published comparators		



Secondary School Severely Absent (50% or more missed) (Full Academic Year)	2022	2023	* 2023-2024 (Full year on DfE Portal (via Wonde))	* 2024-2025 (Year to date on DfE Portal (via Wonde))	Trend
All Pupils	3.1	3.1	3.5	2.5	
National	2.7	3.4	awaiting DfE	awaiting DfE	
Free School Meals (eligible in the last 6 years (FSM6))	6.2	6.2	8.4	5.9	
Non Free School Meals (not eligible in the last 6 years (FSM6))	1.8	1.8	2.3	1.6	
SEND (SEN Support & EHCP)	6.4	6.2			
EHCP	7.8	6.1	16.5	13.0	
SEN Support	6.1	6.2	6.8	4.2	
Non SEND	2.3	2.2	2.3	1.6	
Shropshire CLA (based on published 903)					
Shropshire CLA (all children)					

Shropshire	National	Statistical Neighbour	West Midlands
3.5	awaiting DfE	3.6	3.4
8.4	6.7	7.8	6.0
2.3	1.7	2.0	1.7
0.0	7.6	7.8	7.1
16.5	9.6	10.5	9.7
6.8	7.2	7.4	6.8
2.3	2.2	2.3	2.3
0.0			
No published comparators			

2021	2022	2023
72	107	67
77	97	64
112	133	98
56	98	52
55	83	39
44	100	59
106	121	80
No published comparators		



Data Source: published DfE statistics - Pupil absence in schools in England. Next published full year is expected in March 2025 for academic year 2023/24.

A pupil is classified as a persistent absentee if they miss 10% or more of their own possible sessions

\* Figures derived from the DfE Attendance Portal (via Wonde) are published as experimental official statistics to give an indicative figure for the absence rate during the 2023/24 academic year to date and 2024/25 year to date.

**Exclusions**

**Latest Benchmark 'Full Year' 2022/23**

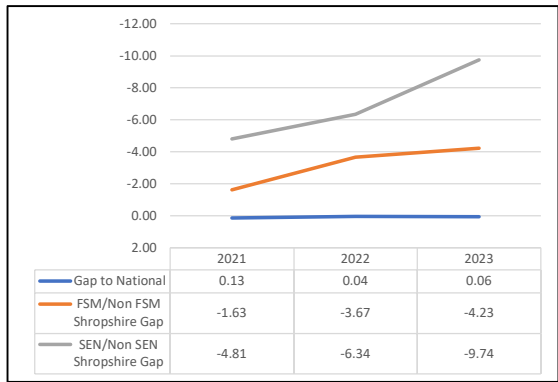
**National Ranking (1 being highest, 152 lowest)**

**Gaps**

<u>Primary School Suspension Rate (Full Academic Year)</u>	2021*	2022	2023	Autumn Term 2023	Trend
All Pupils	0.86	1.38	1.75	0.79	
National	0.99	1.42	1.81	0.83	
Free School Meals (FSM)	2.23	4.42	5.21	2.46	
Non Free School Meals (Non FSM)	0.60	0.75	0.98	0.43	
SEND (SEN Support & EHCP)	5.03	6.82	10.03	4.43	
EHCP	6.15	11.40	23.28	9.91	
SEN Support	4.88	6.20	8.02	3.37	
Non SEND	0.22	0.48	0.29	0.13	

Shropshire	National	Statistical Neighbour	West Midlands
1.75	1.81	2.34	1.81
5.21	4.43	6.36	3.91
0.98	0.99	1.39	0.98
10.03	9.10	12.20	8.76
23.28	16.40	23.50	18.83
8.02	7.73	9.70	7.39
0.29	0.42	0.45	0.47

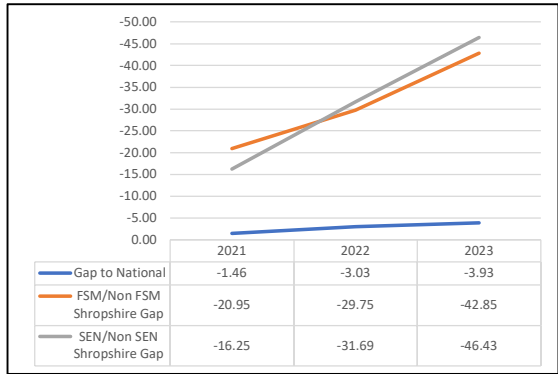
2021	2022	2023
71	92	85
77	111	106
96	86	93
86	85	103
49	76	130
106	88	98
76	131	48



<u>Secondary School Suspension Rate (Full Academic Year)</u>	2021*	2022	2023	Autumn Term 2023	Trend
All Pupils	9.94	16.99	22.83	10.04	
National	8.48	13.96	18.90	8.19	
Free School Meals (FSM)	28.00	42.21	58.30	27.15	
Non Free School Meals (Non FSM)	7.05	12.46	15.45	6.16	
SEND (SEN Support & EHCP)	24.15	44.41	62.50	24.51	
EHCP	26.07	46.24	72.35	27.09	
SEN Support	23.69	44.04	60.84	24.04	
Non SEND	7.90	12.72	16.07	7.38	

Shropshire	National	Statistical Neighbour	West Midlands
22.83	18.90	19.42	17.20
58.30	45.58	51.37	36.25
15.45	11.06	12.39	10.31
62.50	47.70	53.00	40.90
72.35	47.17	52.96	41.15
60.84	47.82	49.51	40.90
16.07	13.90	13.38	12.96

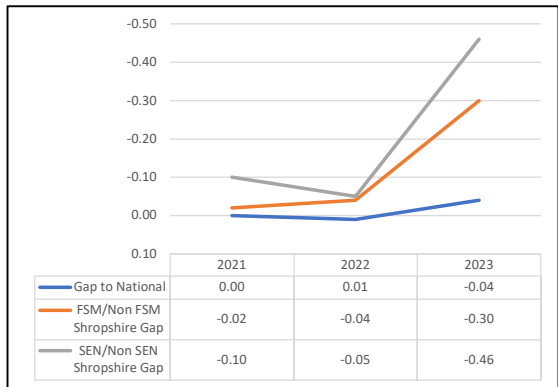
2021	2022	2023
105	112	104
118	115	110
116	129	128
94	110	117
83	112	134
91	110	113
117	115	100



<u>Primary School Permanent Exclusion Rate (Full Academic Year)</u>	2021*	2022	2023	Autumn Term 2023	Trend
All Pupils	0.01	0.01	0.07	0.01	
National	0.01	0.02	0.03	0.01	
Free School Meals (FSM)	0.03	0.05	0.32	0.05	
Non Free School Meals (Non FSM)	0.01	0.01	0.02	0.01	
SEND (SEN Support & EHCP)	0.10	0.06	0.47	0.06	
EHCP	0.00	0.00	0.67	-	
SEN Support	0.11	0.07	0.44	0.07	
Non SEND	0.00	0.01	0.01	0.01	

Shropshire	National	Statistical Neighbour	West Midlands
0.07	0.03	0.04	0.04
0.32	0.07	0.13	0.10
0.02	0.01	0.02	0.02
0.47	0.14	0.22	0.23
0.67	0.20	0.37	0.30
0.44	0.13	0.19	0.22
0.01	0.00	0.00	0.01

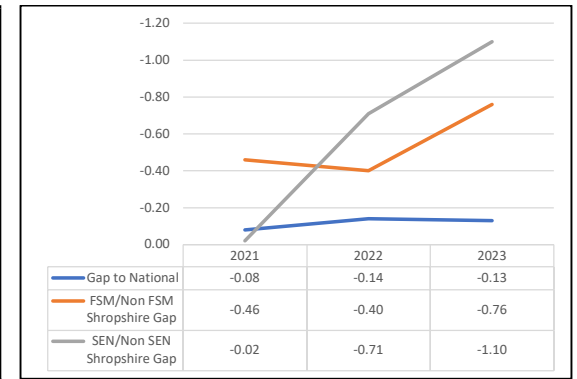
2021	2022	2023
119	86	119
108	101	114
135	82	68
129	78	120
1	1	69
134	87	113
1	115	25



Secondary School Permanent Exclusion Rate (Full Academic Year)	2021*	2022	2023	Autumn Term 2023	Trend
All Pupils	0.18	0.30	0.35	0.15	
National	0.10	0.16	0.22	0.10	
Free School Meals (FSM)	0.58	0.64	0.98	0.46	
Non Free School Meals (Non FSM)	0.12	0.24	0.22	0.08	
SEND (SEN Support & EHCP)	0.20	0.91	1.29	0.39	
EHCP	0.00	0.54	0.84	0.25	
SEN Support	0.24	0.98	1.36	0.41	
Non SEND	0.18	0.20	0.19	0.11	

Shropshire	National	Statistical Neighbour	West Midlands
0.35	0.22	0.26	0.28
0.98	0.60	0.80	0.65
0.22	0.11	0.14	0.14
1.29	0.66	0.77	0.76
0.84	0.41	0.53	0.40
1.36	0.71	0.83	0.81
0.19	0.15	0.16	0.19

2021	2022	2023
128	131	121
134	114	129
133	150	130
51	137	133
1	122	77
61	138	131
146	133	100



2022-23 full year statistics latest publication 18 July 2024. Autumn 2023 term published 21 November 2024

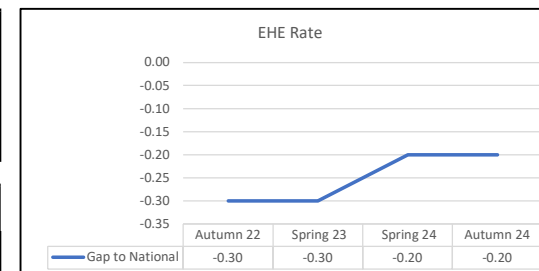
1. For 2019/20 and 2020/21, while suspensions and permanent exclusions were possible throughout the academic year, pandemic restrictions will have had an impact on the numbers presented and caution should be taken when comparing across years.

Latest Term Benchmark Autumn 24

Number of EHE children at any point during a full year and latest term available	2021-22 (Full Year)	2022-23 (Full Year)	2023-24 (Full Year)	Latest Term 2024 5 (Aut24)	Trend
All Pupils	630	760	650	650	
National	116,300	126,100	153,300	111,700	

Shropshire	National	Statistical Neighbour	West Midlands
650	111,700	12,220	12,570

2021-22	2022-23	2023-24
-	-	-



EHE Termly rate - mid year point (Spring Term)	Autumn 22	Spring 23	Spring 24	Autumn 24	Trend
All Pupils	1.3	1.4	1.5	1.6	
National	1.0	1.1	1.3	1.4	

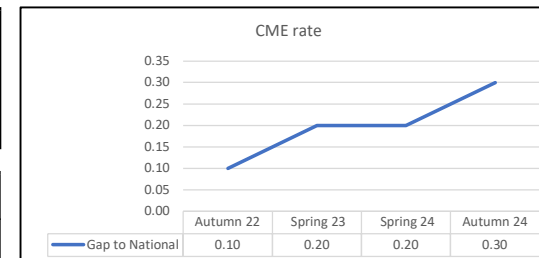
Shropshire	National	Statistical Neighbour	West Midlands
1.6	1.4	1.9	1.2

(Aut 22)	(Spr 23)	(Aut23)
-	-	-

Number of CME children at any point during a full year and latest term available	2021-22 (Full Year)	2022-23 (Full Year)	2023-24 (Full Year)	Latest Term 2024 5 (Aut24)	Trend
All Pupils	180	270	230	80	
National	94,900	117,100	149,900	39,200	

Shropshire	National	Statistical Neighbour	West Midlands
80	39,200	2,130	3,330

2021-22	2022-23	2023-24
-	-	-



CME Termly rate - mid year point (Spring Term)	Autumn 22	Spring 23	Spring 24	Autumn 24	Trend
All Pupils	0.2	0.1	0.2	0.2	
National	0.3	0.3	0.4	0.5	

Shropshire	National	Statistical Neighbour	West Midlands
0.2	0.5	0.3	0.3

(Aut 22)	(Spr 23)	(Aut23)
-	-	-

DfE figures are published as official statistics in development (first collection was in autumn 22)

Data is presented for the number of children who were EHE or CME at any point during the full academic year or at any termly point. This publication is updated annually, the next release in winter 2025 will include termly data collected up to autumn 2025.